



HOME 383

A four bedroom detached home
with allocated parking and
double garage

SYDENHAM SQUARE
— POUNDBURY —

HOME 383

A four bedroom, detached home with a double garage and allocated parking

SPECIFICATION

Fully fitted kitchen with appliances

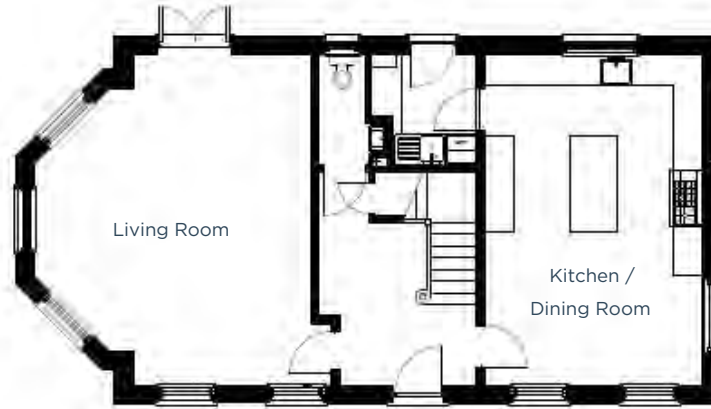
Master bedroom with en-suite

Contemporary bathroom

Downstairs cloakroom

Enclosed, fully turfed rear garden

Energy efficient,
gas central heating



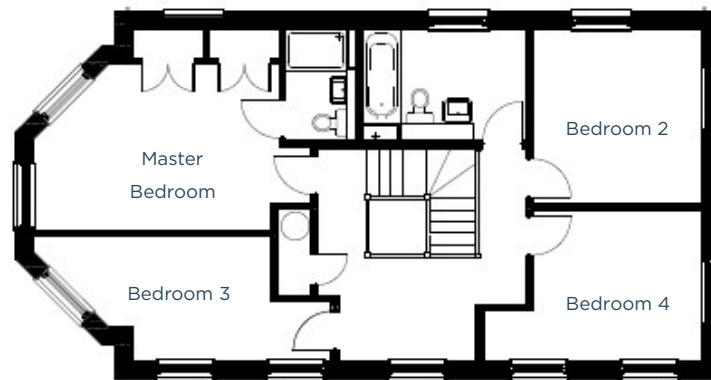
GROUND FLOOR

Kitchen / Dining Room

6.5m x 4.3m | 21' 5" x 14' 3"

Living Room

6.5m x 5.5m max | 21' 5" x 18' max



FIRST FLOOR

Master bedroom

5.6m max x 3.9m | 18' 5" max x 13' 1"

Bedroom 2

3.4m x 3.3m | 11' 3" x 11' 1"

Bedroom 3

4.8m max x 2.4m | 15' 10" max x 8' 1"

Bedroom 4

3.3m x 3m | 11' 1" x 9' 10"

01305 213745 | poundbury@morrishhomes.co.uk
morrishhomes.co.uk

Floor plans are provided to indicate proposed floor layout for each home. Room measurements are accurate within + or - 50mm, however it is not recommended that these measurements are used for flooring installation, or such like.